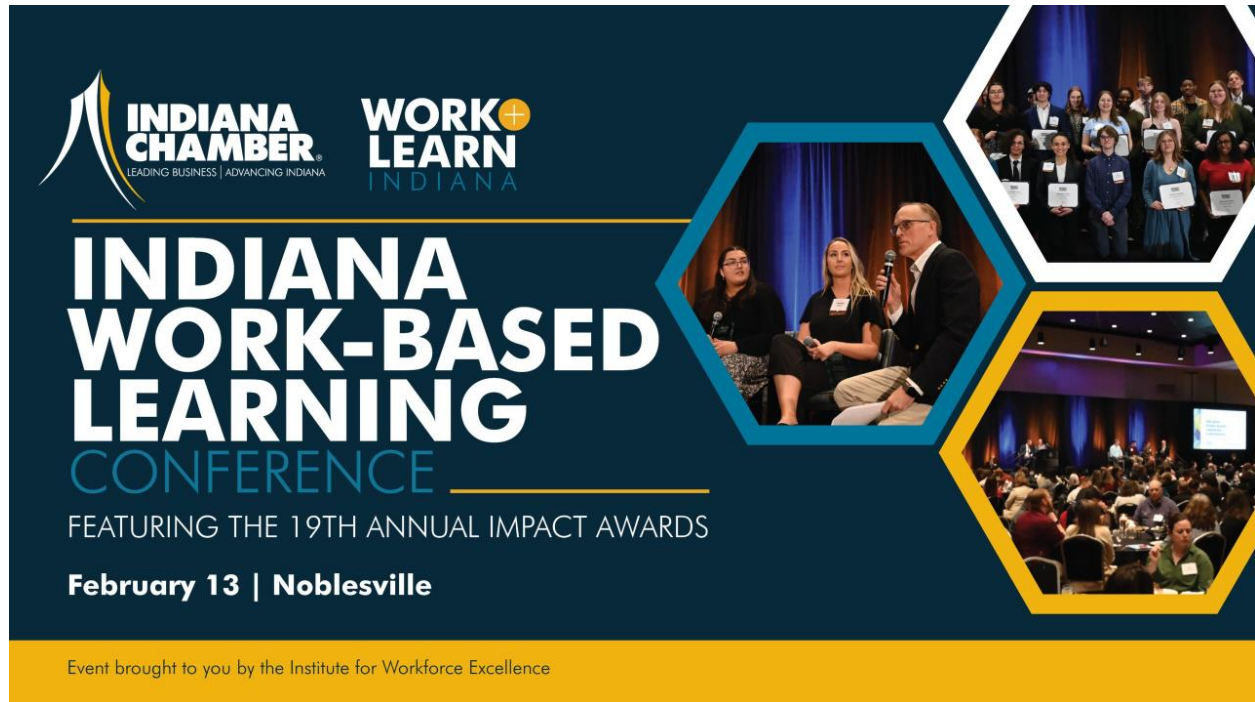


[Skip to content](#)



## Indiana Work-Based Learning Conference, Featuring the 19th Annual Impact Awards



## Indiana Work-Based Learning Conference, Featuring the 19th Annual Impact Awards

**February 13, 2025 @ 8:00 am - 4:30 pm**

Presented in partnership between the Institute for Workforce Excellence and the Indiana Chamber of Commerce, the Indiana Work-Based Learning Conference is a convening of best practices and sharing of ideas toward growth and partnership within workforce and education. It will take place February 13 at the Embassy Suites in Noblesville. The program is brought to you by [Project Lead The Way](#).

The 19th Annual Impact Awards Luncheon will be held as part of the conference. Register to attend the entire event or only the Impact Awards program, which will celebrate Hoosier work-based learners, employers, innovative programs, work-based learning supervisors and career development professionals.

[Learn more.](#)

### Agenda

8:00 a.m. – 9:00 a.m.- Check-In and Expo Tables Open (includes continental breakfast)  
9:00 a.m. – 12:00 p.m. Morning Session  
12 p.m. – 1:45 p.m. 19th Annual Impact Awards Luncheon  
2:00 – 4:00 p.m. Afternoon Session  
4:00 – 4:30 p.m. Closing Reception

Schedule subject to change.

### **Registration**

Registration is now open!

### **Conference and Lunch**

Time: 8 a.m. – 4:30 p.m.

For-Profit Pricing: \$350

Nonprofit Pricing: \$175

### **Awards Luncheon Only**

Time: 12 – 1:45 p.m.

For-Profit Pricing: \$125

Nonprofit Pricing: \$100

Student/Parent Pricing: \$50

Table of 8: \$1500

### **[Register.](#)**

- [Supervising and Managing People Workshop](#)
- [Supervising and Managing People Workshop](#)

### **Details**

#### **Date:**

February 13, 2025

#### **Time:**

8:00 am - 4:30 pm

#### **Website:**

<https://www.workandlearnindiana.com/impact-awards>

#### **Organizer**

[Institute for Workforce Excellence](#)

## Venue

[Embassy Suites Noblesville](#)

13700 Conference Center Dr S

Noblesville, IN 46060 United States+ [Google Map](#)



## Quick Links

- [About](#)
- [Governing Board](#)
- [Events](#)
- [News](#)
- [Resource Library](#)
- [Contact](#)

## Contact Us

Institute for Workforce Excellence

115 W Washington St

Suite 850S

Indianapolis, IN 46204

[317-264-6852](tel:317-264-6852)

[institute@indianachamber.com](mailto:institute@indianachamber.com)

## Newsletter Sign Up

[Subscribe](#)

© 2024 Institute for Workforce Excellence | [Privacy Policy](#)